



Certificate of Analysis

CANNABUSINESS LABORATORIES, LLC

Customer:

Rhodes Farm LLC
101 Deerfield Lane
Mill Hall, PA 17751

Sample ID **221005046**
Order Number **CB221005014**
Sample Name **Flower - Cherry Bubblegum**

Received Date **10/11/2022**
COA Released **10/13/2022**

External Sample ID **Flower - Cherry Bubblegum**

Batch Number **001**
Product Type **Flower**
Sample Type **Flower**

Comments

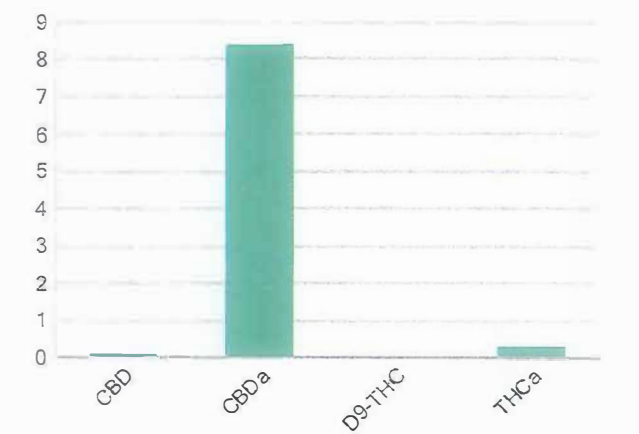
CANNABINOID PROFILE (Product Size = 3.5 g)

Analyte	LOQ (%)	% Dry Weight	mg/g	mg/serving
CBC	0.01	ND	ND	ND
CBD	0.01	0.103	1.030	3.61
CBDa	0.01	8.397	83.97	293.90
CBDV	0.01	ND	ND	ND
CBG	0.01	ND	ND	ND
CBGa	0.01	ND	ND	ND
CBN	0.01	ND	ND	ND
d8-THC	0.01	ND	ND	ND
d9-THC	0.01	0.029	0.289	1.01
THCa	0.01	0.300	3.000	10.50
Total Cannabinoids		8.829	88.29	309.00
Total Potential THC		0.292	2.920	10.22
Total Potential CBD		7.467	74.67	261.30
Total Potential CBG		N/A	N/A	ND
Ratio of Total Potential CBD to Total Potential THC				25.57 : 1
Ratio of Total Potential CBG to Total Potential THC				N/A

SAMPLE IMAGE



CANNABINOIDS % Dry Weight



*Total Cannabinoids refers to the sum of all cannabinoids detected.
 *Total Potential CBD = (0.877 x CBDa) + CBD. *Total Potential THC = (0.877 x THCa) + THC. *Total Potential CBG = (0.877 x CBGa) + CBG.
 *Total Potential THC/CBD are calculated to take into account the loss of an acid group during decarboxylation.



Laboratory Manager
SIGNATURE

Jamie Hobgood
LABORATORY MANAGER

10/13/2022 10:23 AM
DATE

This product has been tested by CannaBusiness Laboratories using validated testing methodologies and a quality system. Values reported relate only to the product tested. CannaBusiness Laboratories makes no claims as to the efficacy, safety, or other risks associated with any detected or non-detected levels of any compounds reported herein. This Certificate shall not be reproduced except in full, without the written permission of CannaBusiness Laboratories. Photo is of sample received by the lab and may vary from final packaging. The results apply to the sample as received.



Certificate of Analysis

CANNABUSINESS LABORATORIES, LLC

Customer

Rhodes Farm LLC
101 Deerfield Lane
Milli Hall, PA 17751



Overall Batch Results	
Pesticide	Moisture Content
Potency	Water Activity
Mycotoxins	Heavy Metals
Microbial Screen	Residual Solvents
Terpenoids	

Sample Name: Flower - Cherry Bubblegum
Sample ID: 221005046
Order Number: CB221005014
Product Type: Flower
Sample Type: Flower
Received Date: 10/11/2022
Batch Number: 001
COA released: 10/13/2022 10

Potency (mg/g) Dry Weight			
Date Tested: 10/12/2022		Method: CB-SOP-028	
Instrument:			

0.292 %	7.467 %	8.829 %	88.29 mg/g
Total THC	Total CBD	Total Cannabinoids	Total Cannabinoids

Analyte	Result	Units	LOQ	Result	Units
CBC (Cannabichromene)	ND	%	0.010	ND	mg/g
CBD (Cannabidiol)	0.103	%	0.010	1.030	mg/g
CBDa (Cannabidiolic Acid)	8.397	%	0.010	83.97	mg/g
CBDV (Cannabidivarin)	ND	%	0.010	ND	mg/g
CBG (Cannabigerol)	ND	%	0.010	ND	mg/g
CBGa (Cannabigerolic Acid)	ND	%	0.010	ND	mg/g
CBN (Cannabinol)	ND	%	0.010	ND	mg/g
D8-THC (D8-Tetrahydrocannabinol)	ND	%	0.010	ND	mg/g
D9-THC (D9-Tetrahydrocannabinol)	0.029	%	0.010	0.289	mg/g
THCa (Tetrahydrocannabinolic Acid)	0.300	%	0.010	3.000	mg/g

Terpenoids					
Date Tested: 10/12/2022			Method: CB-SOP-026		
Instrument:					

Analyte	Result	Unit	LOQ	Result	Unit
alpha-Bisabolol	0.206	mg/g	0.100	0.0206	%
alpha-humulene	0.580	mg/g	0.100	0.0580	%
alpha-pinene	1.260	mg/g	0.100	0.1260	%
alpha-terpinene	<LOQ	mg/g	0.100	<LOQ	%
beta-caryophyllene	1.756	mg/g	0.100	0.1756	%
Beta-myrcene	<LOQ	mg/g	0.100	<LOQ	%
Beta-pinene	0.433	mg/g	0.100	0.0433	%
cis-Nerolidol	<LOQ	mg/g	0.100	<LOQ	%
Camphene	<LOQ	mg/g	0.100	<LOQ	%
d-Limonene	0.158	mg/g	0.100	0.0158	%
delta-3-Carene	<LOQ	mg/g	0.100	<LOQ	%
Eucalyptol	<LOQ	mg/g	0.100	<LOQ	%
gamma-Terpinene	<LOQ	mg/g	0.100	<LOQ	%
Geraniol	<LOQ	mg/g	0.100	<LOQ	%
Guaiol	<LOQ	mg/g	0.100	<LOQ	%
Isopulegol	<LOQ	mg/g	0.100	<LOQ	%
Linalool	0.118	mg/g	0.100	0.0118	%
Ocimene (mixture of isomers)	0.144	mg/g	0.100	0.0144	%
p-Isopropyltoluene (p-Cymene)	<LOQ	mg/g	0.100	<LOQ	%
trans-beta-Ocimene	<LOQ	mg/g	0.100	<LOQ	%
trans-Nerolidol	<LOQ	mg/g	0.100	<LOQ	%
Terpinolene	<LOQ	mg/g	0.100	<LOQ	%

Potency (mg/g) Dry Weight							
Date Tested: 10/12/2022		Method: CB-SOP-028		Instrument:			

Analyte	Result	Units	LOQ	Result	Analyte	Result	Units	LOQ	Result
Percent Moisture	11	%	0.010						



Jamie Hobgood
Laboratory Manager
SIGNATURE

Jamie Hobgood

10/13/2022 10:23 AM
DATE

NT = Not tested, ND = Not detected; LOQ = Limit of Quantitation; <LOQ = Detected; >LOQ = Above upper limit of linearity; CFU/g = Colony forming units per 1 gram; TNTC = Too numerous to count

This product has been tested by CannaBusiness Laboratories using validated testing methodologies and a quality system. Values reported relate only to the product tested. CannaBusiness Laboratories makes no claims as to the efficacy, safety, or other risks associated with any detected or non-detected levels of any compounds reported herein. This Certificate shall not be reproduced except in full, without the written permission of CannaBusiness Laboratories. Photo is of sample received by the lab and may vary from final packaging. The results apply to the sample as received.



Certificate of Analysis

CANNABUSINESS LABORATORIES, LLC

Customer:
Rhodes Farm LLC
101 Deerfield Lane
Mill Hall, PA 17751

Sample ID 220914023
Order Number CB220914008
Sample Name 42-000787-SA0201-03

Received Date 9/15/2022
COA Released 9/16/2022

External Sample ID

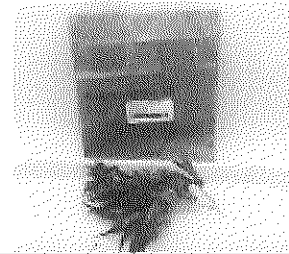
Batch Number Cherry Bubblegum
Product Type Flower
Sample Type Flower

Comments

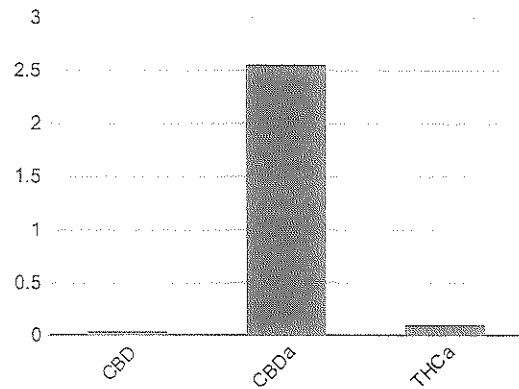
CANNABINOID PROFILE

Analyte	LOQ (%)	% Dry Weight	mg/g
CBC	0.01	ND	ND
CBD	0.01	0.033	0.326
CBDa	0.01	2.555	25.55
CBDV	0.01	ND	ND
CBG	0.01	ND	ND
CBGa	0.01	ND	ND
CBN	0.01	ND	ND
d8-THC	0.01	ND	ND
d9-THC	0.01	ND	ND
THCa	0.01	0.095	0.952
Total Cannabinoids		2.683	26.83
Total Potential THC		0.084	0.835
Total Potential CBD		2.273	22.73
Total Potential CBG		N/A	N/A
Ratio of Total Potential CBD to Total Potential THC			27.06 : 1
Ratio of Total Potential CBG to Total Potential THC			N/A

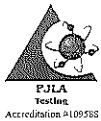
SAMPLE IMAGE



CANNABINOIDS % Dry Weight



*Total Cannabinoids refers to the sum of all cannabinoids detected.
*Total Potential CBD = (0.877 x CBDa) + CBD. *Total Potential THC = (0.877 x THCa) + THC. *Total Potential CBG = (0.877 x CBGa) + CBG.
*Total Potential THC/CBD are calculated to take into account the loss of an acid group during decarboxylation.



Jamie Hobgood
Laboratory Manager
SIGNATURE

Jamie Hobgood
LABORATORY MANAGER

09/16/2022 11:52 AM
DATE

This product has been tested by Cannabusiness Laboratories using validated testing methodologies and a quality system. Values reported relate only to the product tested. Cannabusiness Laboratories makes no claims as to the efficacy, safety, or other risks associated with any detected or non-detected levels of any compounds reported herein. This Certificate shall not be reproduced except in full, without the written permission of Cannabusiness Laboratories. Photo is of sample received by the lab and may vary from final packaging. The results apply to the sample as received.

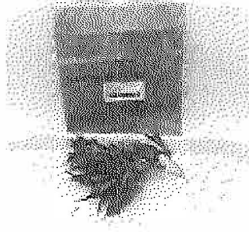


Certificate of Analysis

CANNABUSINESS LABORATORIES, LLC

Customer

Rhodes Farm LLC
101 Deerfield Lane
Mill Hall, PA 17751



Overall Batch Results	
Pesticide	Moisture Content
Potency	Water Activity
Mycotoxins	Heavy Metals
Microbial Screen	Residual Solvents
Terpenoids	

Sample Name: 42-000787-SA0201-03
Sample ID: 220914023
Order Number: CB220914008
Product Type: Flower
Sample Type: Flower
Received Date: 09/15/2022
Batch Number: Cherry Bubblegum
COA released: 09/16/2022 11:52 AM

Potency (mg/g) Dry Weight
Date Tested: 09/16/2022 Method: CB-SOP-028
Instrument:

0.084 % Total THC	2.273 % Total CBD	2.683 % Total Cannabinoids	26.83 mg/g Total Cannabinoids
----------------------	----------------------	-------------------------------	----------------------------------

Analyte	Result	Units	LOQ	Result	Units
CBC (Cannabichromene)	ND	%	0.010	ND	mg/g
CBD (Cannabidiol)	0.033	%	0.010	0.326	mg/g
CBDa (Cannabidiolic Acid)	2.555	%	0.010	25.55	mg/g
CBDV (Cannabidivarin)	ND	%	0.010	ND	mg/g
CBG (Cannabigerol)	ND	%	0.010	ND	mg/g
CBGa (Cannabigerolic Acid)	ND	%	0.010	ND	mg/g
CBN (Cannabinol)	ND	%	0.010	ND	mg/g
D8-THC (D8-Tetrahydrocannabinol)	ND	%	0.010	ND	mg/g
D9-THC (D9-Tetrahydrocannabinol)	ND	%	0.010	ND	mg/g
THCa (Tetrahydrocannabinolic Acid)	0.095	%	0.010	0.952	mg/g

Potency (mg/g) Dry Weight
Date Tested: 09/16/2022 Method: CB-SOP-028 Instrument:

Analyte	Result	Units	LOQ	Result	Analyte	Result	Units	LOQ	Result
Percent Moisture	12	%	0.010						



Jamie Hobgood
Laboratory Manager
SIGNATURE

Jamie Hobgood

09/16/2022 11:52 AM

DATE

NT = Not tested, ND = Not detected, LOQ = Limit of Quantitation; <LOQ = Detected; >UOEL = Above upper limit of linearity; CFU/g = Colony forming units per 1 gram; TNTC = Too numerous to count

This product has been tested by CannaBusiness Laboratories using validated testing methodologies and a quality system. Values reported relate only to the product tested. CannaBusiness Laboratories makes no claims as to the efficacy, safety, or other risks associated with any detected or non-detected levels of any compounds reported herein. This Certificate shall not be reproduced except in full, without the written permission of CannaBusiness Laboratories. Photo is of sample received by the lab and may vary from final packaging. The results apply to the sample as received.