



Certificate of Analysis

CANNABUSINESS LABORATORIES, LLC

Customer:

Rhodes Farm LLC
101 Deerfield Lane
Mill Hall, PA 17751

Sample ID **220919037**
Order Number **CB220919015**
Sample Name **Grizzly Flower**

External Sample ID **GRIZ-0919**

Received Date **9/22/2022**
COA Released **9/27/2022**

Batch Number **01**
Product Type **Flower**
Sample Type **Flower**

Comments

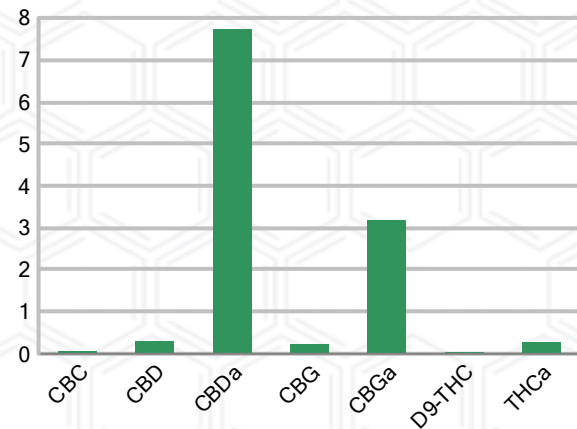
CANNABINOID PROFILE (Product Size = 3.5 g)

Analyte	LOQ (%)	% Dry Weight	mg/g	mg/unit
CBC	0.01	0.062	0.621	2.17
CBD	0.01	0.290	2.902	10.16
CBDa	0.01	7.737	77.37	270.80
CBDV	0.01	ND	ND	ND
CBG	0.01	0.225	2.246	7.86
CBGa	0.01	3.190	31.90	111.60
CBN	0.01	ND	ND	ND
d8-THC	0.01	ND	ND	ND
d9-THC	0.01	0.043	0.431	1.51
THCa	0.01	0.283	2.833	9.92
Total Cannabinoids		11.83	118.3	414.10
Total Potential THC		0.292	2.915	10.20
Total Potential CBD		7.076	70.76	247.70
Total Potential CBG		3.026	30.26	105.90
Ratio of Total Potential CBD to Total Potential THC				24.23 : 1
Ratio of Total Potential CBG to Total Potential THC				10.36 : 1

SAMPLE IMAGE



CANNABINOIDS % Dry Weight



*Total Cannabinoids refers to the sum of all cannabinoids detected.

*Total Potential CBD = (0.877 x CBDa) + CBD. *Total Potential THC = (0.877 x THCa) + THC. *Total Potential CBG = (0.877 x CBGa) + CBG.

*Total Potential THC/CBD are calculated to take into account the loss of an acid group during decarboxylation.



J. Hobgood
Laboratory Manager

SIGNATURE

Jamie Hobgood

LABORATORY MANAGER

09/27/2022 9:46 AM

DATE

This product has been tested by CannaBusiness Laboratories using validated testing methodologies and a quality system. Values reported relate only to the product tested. CannaBusiness Laboratories makes no claims as to the efficacy, safety, or other risks associated with any detected or non-detected levels of any compounds reported herein. This Certificate shall not be reproduced except in full, without the written permission of CannaBusiness Laboratories. Photo is of sample received by the lab and may vary from final packaging. The results apply to the sample as received.



Certificate of Analysis

CANNABUSINESS LABORATORIES, LLC

Customer

Rhodes Farm LLC
101 Deerfield Lane
Mill Hall, PA 17751



Overall Batch Results	
Pesticide	Moisture Content
Potency	Water Activity
Mycotoxins	Heavy Metals
Microbial Screen	Residual Solvents
Terpenoids	

Sample Name: Grizzly Flower

Sample ID: 220919037

Order Number: CB220919015

Product Type: Flower

Sample Type: Flower

Received Date: 09/22/2022

Batch Number: 01

COA released: 09/27/2022 9:46 AM

Potency (mg/g) Dry Weight

Date Tested: 09/26/2022

Method: CB-SOP-028

Instrument:

0.292 % Total THC	7.076 % Total CBD	11.83 % Total Cannabinoids	118.3 mg/g Total Cannabinoids
-----------------------------	-----------------------------	--------------------------------------	---

Analyte	Result	Units	LOQ	Result	Units
CBC (Cannabichromene)	0.062	%	0.010	0.621	mg/g
CBD (Cannabidiol)	0.290	%	0.010	2.902	mg/g
CBDa (Cannabidiolic Acid)	7.737	%	0.010	77.37	mg/g
CBDV (Cannabidivarin)	ND	%	0.010	ND	mg/g
CBG (Cannabigerol)	0.225	%	0.010	2.246	mg/g
CBGa (Cannabigerolic Acid)	3.190	%	0.010	31.90	mg/g
CBN (Cannabinol)	ND	%	0.010	ND	mg/g
D8-THC (D8-Tetrahydrocannabinol)	ND	%	0.010	ND	mg/g
D9-THC (D9-Tetrahydrocannabinol)	0.043	%	0.010	0.431	mg/g
THCa (Tetrahydrocannabinolic Acid)	0.283	%	0.010	2.833	mg/g

Potency (mg/g) Dry Weight

Date Tested: 09/26/2022

Method: CB-SOP-028

Instrument:

Analyte	Result	Units	LOQ	Result	Analyte	Result	Units	LOQ	Result
Percent Moisture	13	%	0.010						



J. Hobgood
Laboratory Manager

Jamie Hobgood

09/27/2022 9:46 AM

SIGNATURE

DATE

NT = Not tested, ND = Not detected; LOQ = Limit of Quantitation; <LOQ = Detected; >ULOL = Above upper limit of linearity; CFU/g = Colony forming units per 1 gram; TNTC = Too numerous to count

This product has been tested by CannaBusiness Laboratories using validated testing methodologies and a quality system. Values reported relate only to the product tested. CannaBusiness Laboratories makes no claims as to the efficacy, safety, or other risks associated with any detected or non-detected levels of any compounds reported herein. This Certificate shall not be reproduced except in full, without the written permission of CannaBusiness Laboratories. Photo is of sample received by the lab and may vary from final packaging. The results apply to the sample as received.